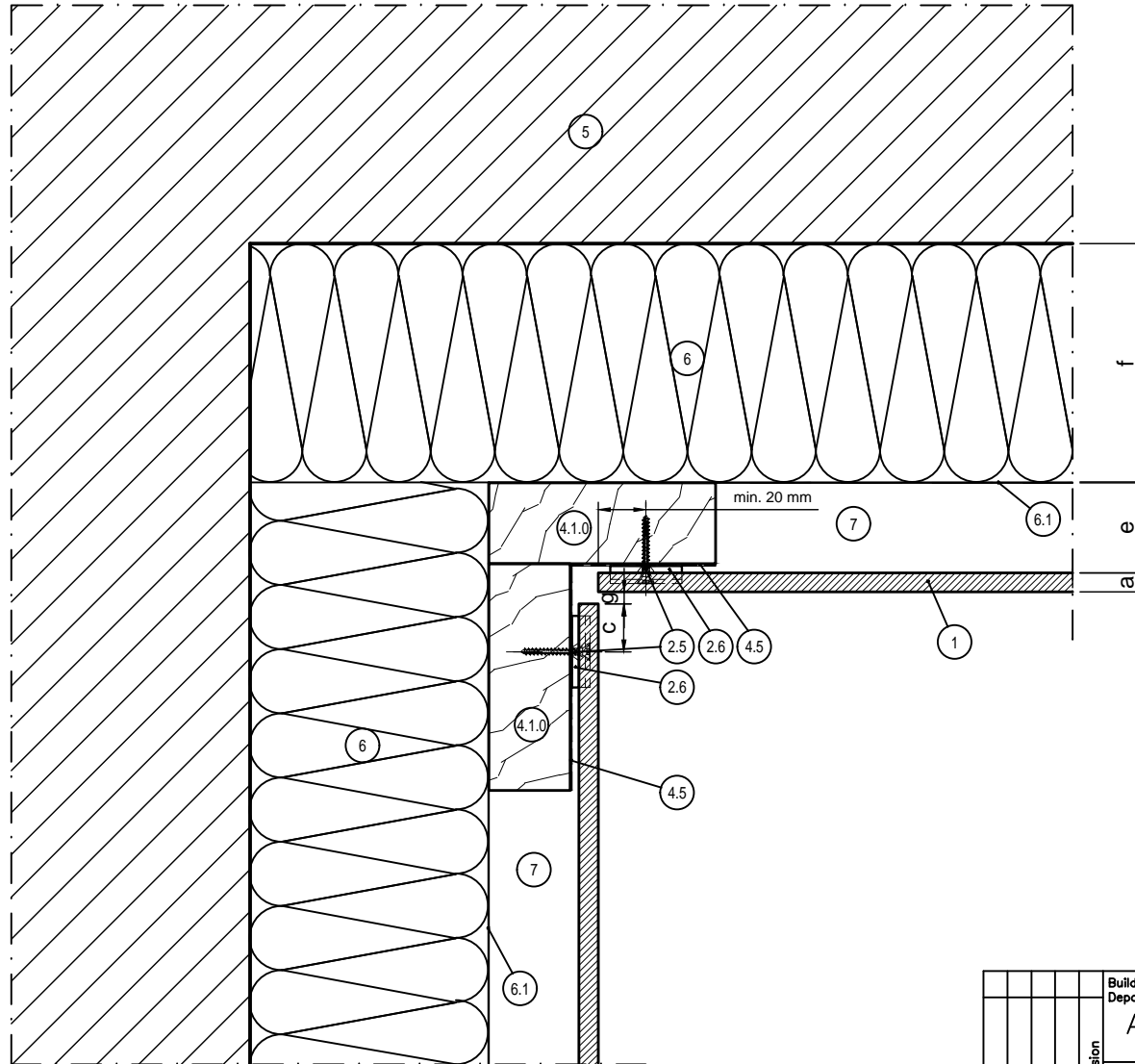


Horizontal section h3.1



LEGEND:	
1	Trespa® PURA NFC® panel
2.5	Counter sunk screw (WÜRTH 3.5 30/25, AW 20)
2.6	Universal clip
4.1.0	Vertical timber batten (min. 95 - 110 x 34 mm)
4.5	EPDM gasket
5	Wall
6	Insulation
6.1	(UV resistant) breather membrane (optional)
7	Ventilated cavity
9.7	Outer-corner profile (PROFACE® CORNEX C128-A)

GENERAL INFORMATION:	
a	Panel thickness 8 mm
c	Edge clearance min. 20 mm, max. 10 x panel thickness
e	Ventilation min. 20 mm. Recommended max. cavity depth (between rainscreen cladding and insulation): 50 mm. Ventilation inlets and outlets min. 50 cm ² /m
f	Insulation (thickness)
g	Distance min. 5 mm

Building/ Department	Alg.		TRESPA®		Remarks	
Revision	Drawn Jan de Jonge	Passingen I.S.O.	A3	PURA FS h3.1	10	
Date	Date JAN 2016	Size	Number	Revision	Sheet	
Scale	1:2	Name	Façade cladding with Trespa® PURA FLUSH Siding Detail h3.1 – Internal corner			